

# **CCD Box PoE Internet Camera**

**ICA-700**

**Quick Installation Guide**

# Table of Contents

1. Package Contents .....	3
2. System Requirements .....	3
3. Outlook.....	4
4. Physical Installation .....	5
5. Setup Tool Installation.....	6
6. Setup Tool Configuration .....	9
7. Cam Viewer Lite Installation .....	14
Appendix A: Feature Listing for Cam Viewer.....	18
Appendix B: Suggest Hardware / System Requirement .....	19
Appendix C: Ordering Information for Cam Viewer Pro.....	20

---

## 1. Package Contents

- 1 x ICA-700
- 1 x Power Adapter
- 1 x Camera Stand
- 1 x CD
- 1 x Quick Installation Guide

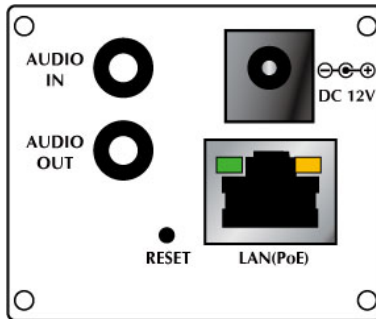
## 2. System Requirements

Network Interface	10/100Base-TX Ethernet
Monitoring System	Recommended for Internet Explorer 6.0 or above
System Hardware	<ul style="list-style-type: none"><li>• CPU: Pentium 4, 1.5GHz or above</li><li>• Memory Size: 512 MB or above</li><li>• VGA card resolution: 1024 x 768 or above</li></ul> Optional: <ul style="list-style-type: none"><li>• Sound Card (for PC)</li><li>• Microphone (for PC and ICA-700)</li><li>• Speaker (for PC and ICA-700)</li></ul>

### 3. Outlook



Rear panel of ICA-700



Port	Description
AUDIO IN	An external microphone can be plugged in.
AUDIO OUT	An external speaker can be plugged in.
RESET	Reset to manufacturer default valued and reboot. When pressed and held over 10 seconds, the settings of IP Camera will be set to the default values.
DC 12V	Connect the supplied power adapter. When this device is obtaining power from PoE, you don't have to attach the power adapter.

LAN (PoE)

Connect your Camera to a 10/100Base-TX hub or switch. It is compliant with IEEE 802.3af PoE. Either mid-span PSE or end-span PSE supported.

## 4. Physical Installation

### 1. Connect an Ethernet cable

Connect one end of an Ethernet cable to the LAN port located on the IP camera's rear panel and connect the other end to the network device (hub or switch).

### 2. Attach the external power supply

Attach the provided power adapter to the IP camera's connector labeled "DC 12V" on the rear panel. If this camera is obtained power from PoE, you don't have to attach the power adapter.



Note

Please use the power adapter that is bundled in package. Using a power supply with a different voltage rating will damage and void the warranty for this product.

### 3. Connect Microphone and Speaker

If you will use the 2-Way audio function, please connect microphone to Audio In and speaker to Audio Out.

## 5. Setup Tool Installation

Initial setup should be performed by using the supplied Windows-based Setup Tool as follows:

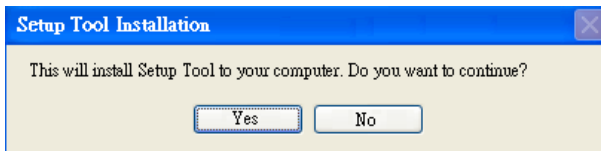
1. Insert the bundled product CD into CD-ROM drive to launch the autorun program.
2. When the web page displayed, select and click the "Setup Tool" hyperlink on the menu to start the installation process.



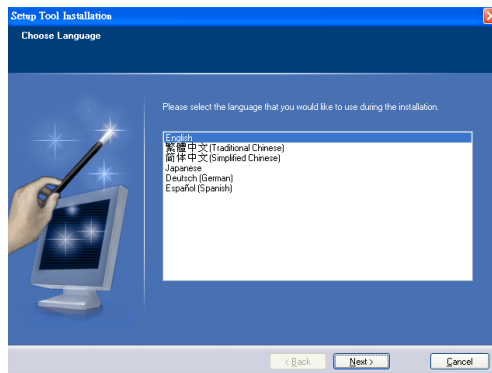
Note

If the CD's menu does not appear, click "Start" on the task bar and select "Run" to type "**X:\Utility\SetupTool.exe**", assume X is your CD-ROM drive

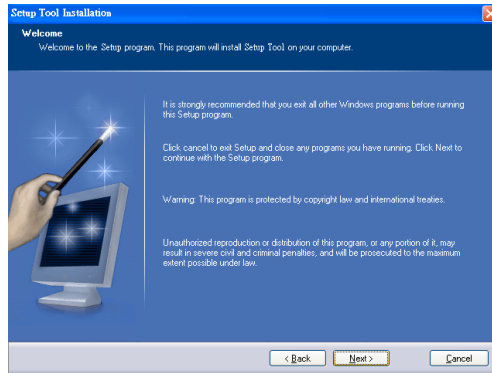
3. Click "**Yes**" to start the Setup Tool Installation.



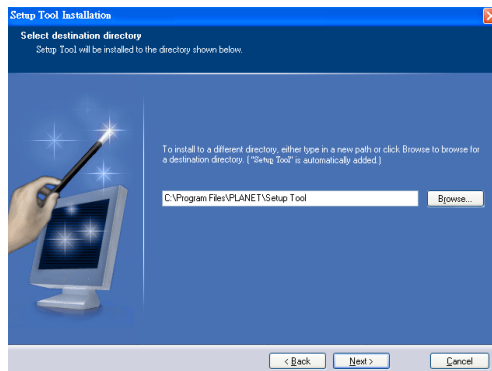
4. Choose the language you need, and click "**Next**" to continue.



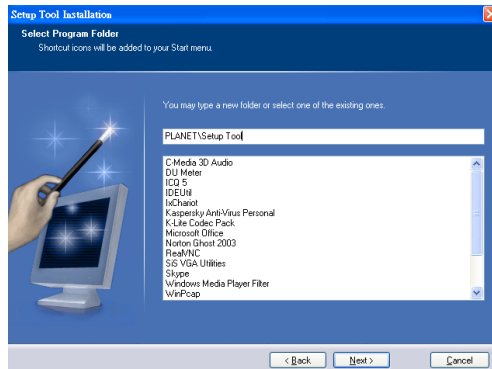
5. Follow the step for install the Setup Tool, and click **"Next"** to continue.



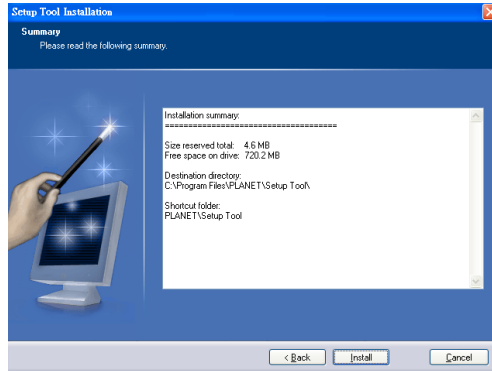
6. If you wish to install the Setup Tool in an alternative location, click **"Browse"** and define a location; otherwise click **"Next"** to continue.



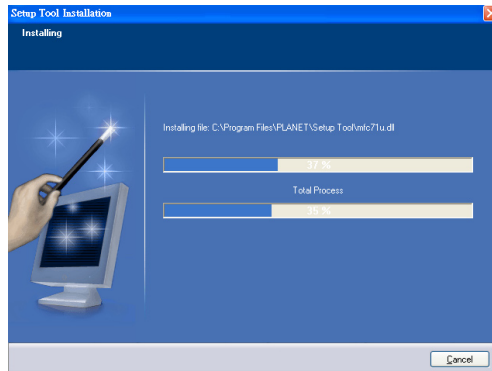
7. If you wish to install the Setup Tool in an alternative folder of start menu, type a new folder name or select a exiting folder; otherwise click **"Next"** to continue.



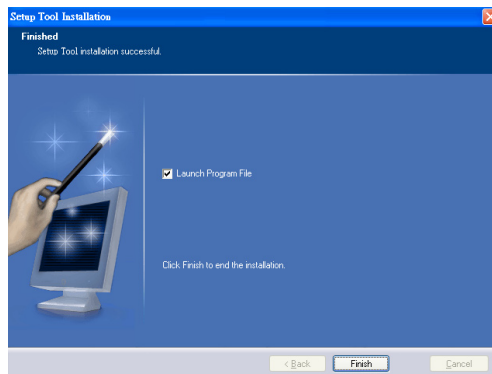
8. Check the installation summary, and click **"Install"** to start the installation.



9. The Setup Tool will be start install to your computer.



10. The Setup Tool installation successful. Click **"Finish"** to complete the installation. If you would like to run the Setup Tool, please check "Launch Program file" before click **Finish** button.





## 6. Setup Tool Configuration

This section shows how to perform basic configuration functions by Setup Tool.

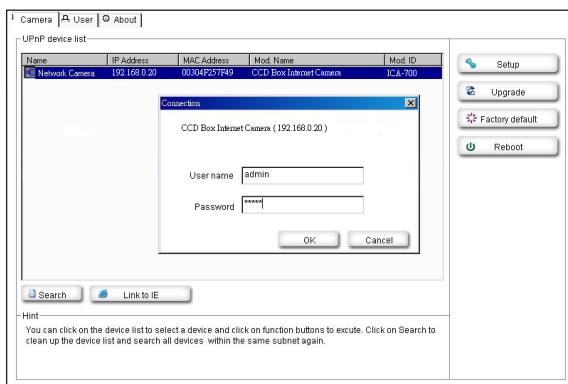
1. Double click the icon of Setup Tool on the desktop.



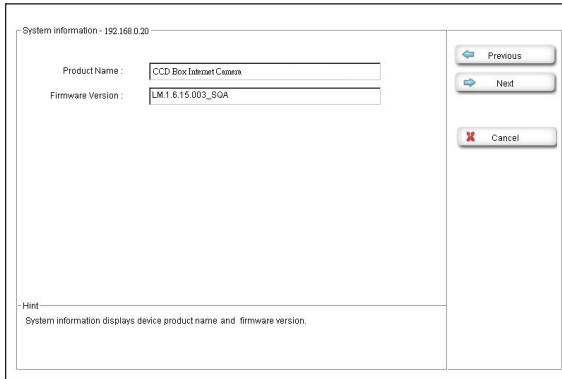
2. The Setup Tool screen will show up as below. It will automatically search and list the IP cameras on your network.



3. Select the IP camera you want, and then click the **"Setup"** button on the right side. The login window will pop up. If the Administrator User Name and Password have been changed, you will need to enter the new settings. In default values, please enter **"admin"** for both User Name and Password. Then click **"OK"**.



4. On the following System information screen, it displays the Product Name, Firmware Version and Hardware Version. Click on **"Next"** to continue.



System information - 192.168.0.20

Product Name : CCD Box Infrared Camera

Firmware Version : LM.1.6.15.003\_SGA

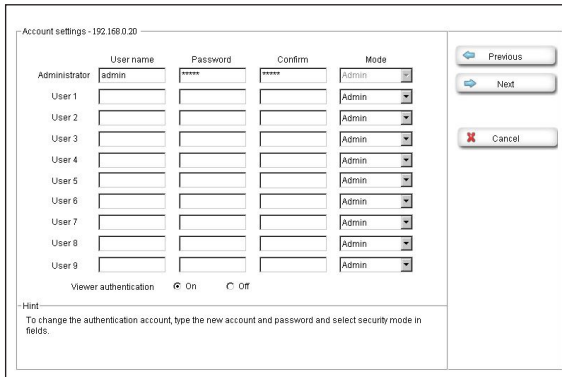
Previous

Next

Cancel

Hint  
System information displays device product name and firmware version.

5. On the following Account settings screen, you can modify the Administrator login user name and password. And you can add some user accounts as Admin, Operator or Viewer. Please click **"Next"** to continue.



Account settings - 192.168.0.20

	User name	Password	Confirm	Mode
Administrator	admin	*****	*****	Admin
User 1				Admin
User 2				Admin
User 3				Admin
User 4				Admin
User 5				Admin
User 6				Admin
User 7				Admin
User 8				Admin
User 9				Admin

Viewer authentication  On  Off

Previous

Next

Cancel

Hint  
To change the authentication account, type the new account and password and select security mode in fields.

6. On the following Date/Time settings screen, you can adjust the date and time to synchronize with PC, manual setting or synchronize with NTP server. Select the correct Time Zone, then click **"Next"** to continue.

Date/Time settings - 192.168.0.20

Current Setting: 2007/1/26 18:52:41  
PC clock: 2007/1/26 18:52:29

Adjust:  Keep current setting  
 Synchronize with PC  
 Manual setting:  
2004/ 1/ 1 00:00:00  
 Synchronize with NTP:  
NTP server name: pool.ntp.org  Auto  
Interval: 01 hours

Time zone: (GMT+08:00) Taipei

Previous  
Next  
Cancel

Hint  
There are three ways to adjust system date and time. The easiest way is to make Network Camera Synchronize with PC. The second way Manual setting is to set the date and time manually by entering new values. The third way Synchronize with NTP is to make Network Camera automatically synchronize with timeservers over the Internet.

7. On the following Network settings screen, you can configure the device HTTP port number, IP address, subnet mask, default gateway and DNS. If you are use PPPoE, please select obtain automatically for IP address and DNS settings. Click **"Next"** to continue.

Network settings - 192.168.0.20

Http Port:  Port 80  others 80 (1024 - 65536)  
MAC Address: 00:30:4F:25:7F:49

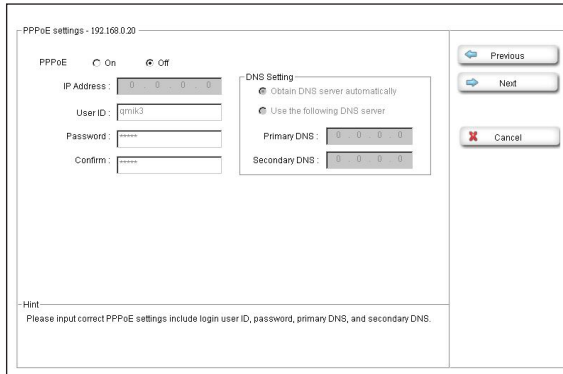
IP Address  
 Obtain IP automatically (DHCP)  
 Use the following IP  
IP Address: 10.0.0.40  
Subnet mask: 255.255.255.0  
Default Gateway: 10.0.0.1

DNS Setting  
 Obtain DNS server automatically  
 Use the following DNS server  
Primary DNS: 0.0.0.0  
Secondary DNS: 0.0.0.0

Previous  
Next  
Cancel

Hint  
You can change the device HTTP port, IP address, subnet mask, default gateway, primary DNS, and secondary DNS. If you use PPPoE, skip IP address and DNS settings. Then click on Next to setup PPPoE.

8. On the following PPPoE settings screen, if you are use PPPoE connection, please select **"On"** and fill the correct User ID and Password for dialling. Click **"Next"** to continue.



PPPoE settings - 192.168.0.20

PPPoE  On  Off

IP Address: 0 . 0 . 0 . 0

User ID: gmik3

Password: \*\*\*\*

Confirm: \*\*\*\*

DNS Setting

Obtain DNS server automatically

Use the following DNS server

Primary DNS: 0 . 0 . 0 . 0

Secondary DNS: 0 . 0 . 0 . 0

Previous

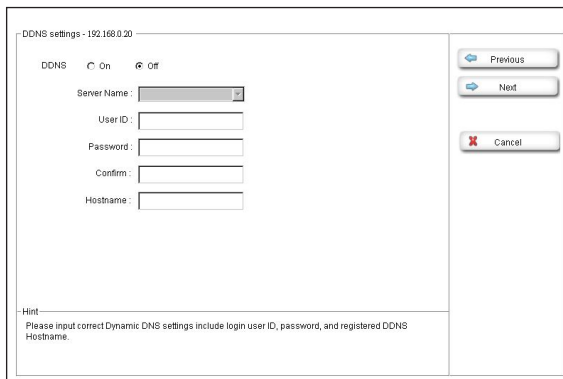
Next

Cancel

Hint

Please input correct PPPoE settings include login user ID, password, primary DNS, and secondary DNS.

9. On the following DDNS settings screen, if you have registered the account from the DDNS provider and want to use DDNS function, please select **"On"** to fill the correct User ID, Password and Hostname for connecting. Click **"Next"** to continue.



DDNS settings - 192.168.0.20

DDNS  On  Off

Server Name: [dropdown]

User ID: [text box]

Password: [text box]

Confirm: [text box]

Hostname: [text box]

Previous

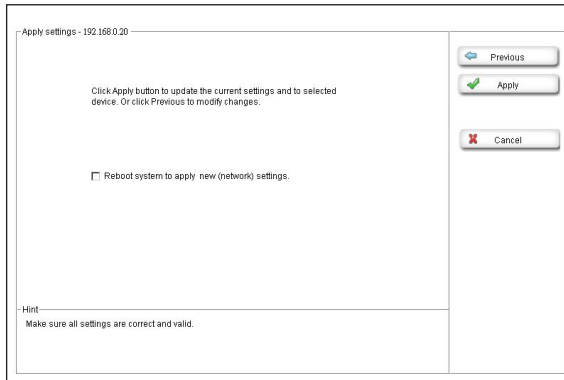
Next

Cancel

Hint

Please input correct Dynamic DNS settings include login user ID, password, and registered DDNS Hostname.

10. In Apply settings screen. Please click **"Apply"** to finish the configuration, we will suggest you check the "Reboot system to apply new settings" to let the camera work with new settings. Or click **"Previous"** to check your settings.



After modifications, you may now connect the IP camera with the new configuration via web browser. For more information, please refer to the User's manual.

## 7. Cam Viewer Lite Installation



Note

The Cam Viewer Lite / Pro 30 days trial version installation steps are similar. Below is the installation of Cam Viewer Lite.

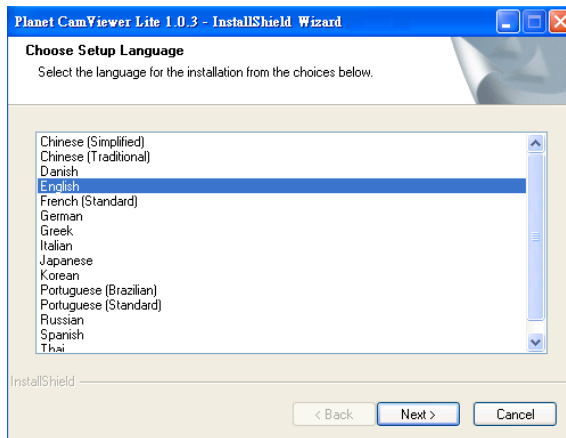
1. Insert the bundled Cam Viewer CD disk into the CD-ROM drive to launch the autorun program. Once completed, a welcome menu screen will appear. Click the "Cam Viewer Lite" hyperlink, the below InstallShield Wizard dialog box will appear.



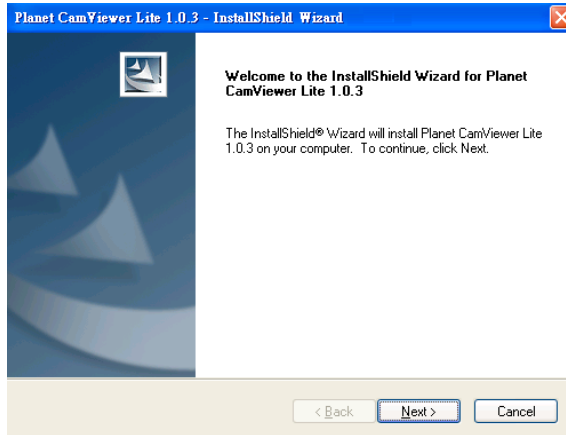
Note

If the welcome screen does not appear, click "Start" at the taskbar. Then, select "Run" and type "X:\Cam Viewer Lite\setup.exe", assume "X" is your CD-ROM drive.

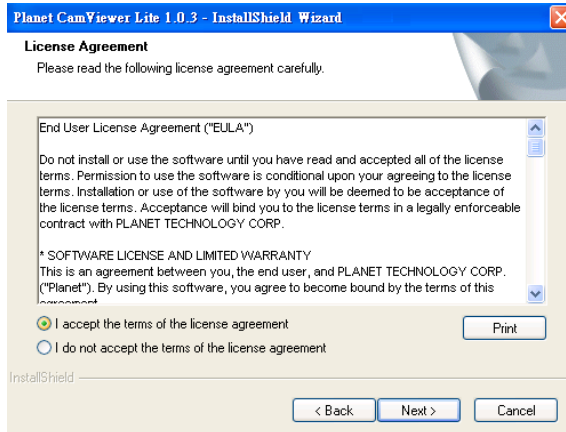
2. Selects the language which you want, Cam Viewer is current including fifteen languages. Please select one of the language and click "Next" to continue.



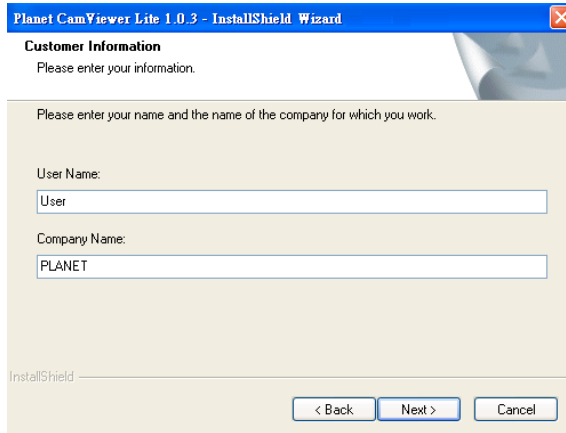
3. The "Welcome to the InstallShield Wizard for Planet Cam Viewer Lite 1.0.3" will display on the screen, please click "Next".



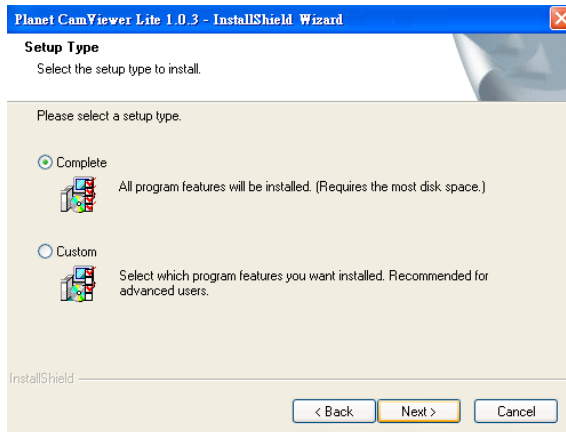
4. Please read the license agreement and then check "I accept the terms of the license agreement" if you are agreed and click "Next" to continue the installation



5. Please key in user name and company name for which you want and click "Next" to continue installation.

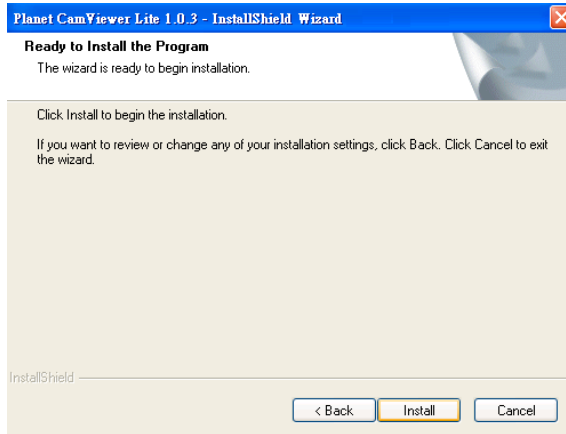


6. Check the option "Complete", all program features will be installed (Requires the most disk space) and click "Next" to continue installation.

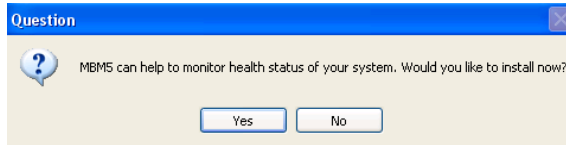




7. "Ready to Install the Program" will appear to prompt you to start the installation. Please click "Install" to start.



8. Please click "No" to finish the Cam Viewer Lite installation.



Note

In above step, when Cam Viewer works with MBM5 (Motherboard Monitor 5), Cam Viewer will display CPU temperature and fan speed. Please click "Yes" if you need this function and refer to the manual of Cam Viewer CD disk for complete installation.

## Appendix A: Feature Listing for Cam Viewer

Software Version	Cam Viewer Lite	Cam Viewer Pro
IP Camera Input	32	16 / 32 / 64
Dual Monitor	-	V
Smart Guard	-	V
I/O Device	V	V
Hotline	-	V
Address Book	-	V
Log Viewer	Unusual event System log	Unusual event System log Counting application
Counting Application	-	2 way counting
Remote Playback Server	-	Unlimited
Concurrent Playback	1 Channel	16 Channels
Counting Function	-	V
Smart Search	General Motion	General Motion Missing Object Foreign Object Lose Focus Camera Occlusion
Remote Live Viewer	1 Channel	16 Channel

## Appendix B: Suggest Hardware / System Requirement

Total FPS	~600	600~480	480~240	240~120	120~
CPU	Intel Core 2 Duo QX6800	Intel Core 2 Duo E6600	Intel Pentium D 930	Intel P4 3.0	Intel P4 2.8
RAM	4 GB	2 GB	2 GB	1 GB	1 GB
Chipset of Motherboard	Intel 946 or 965 chip, Intel Chipset recommended				
VGA Card	ATI Radeon 9200, nVIDIA GeForce FX-5200, Intel 945/965 or above (ATI recommended)				
Ethernet	100Base-TX or Above, Gigabit LAN recommended				
Hard Disk	160 GB or above				
O.S.	Windows 2000 / XP / 2003				

**Total FPS:** Means all the cameras will spend how many frames when this software works. Suppose there are 10 cameras, each one will work with 30fps, the total fps should be 300fps.

---

## ***Appendix C: Ordering Information for Cam Viewer Pro***

<b>Model</b>	<b>Description</b>
CVP-16	16-Channel Cam Viewer Professional
CVP-32	32-Channel Cam Viewer Professional
CVP-64	64-Channel Cam Viewer Professional

Further configuration and information can be found in the user's manual CD. Please check the user's manual for more understanding.